

KIDSBOOK

CHICAGO SYMPHONY ORCHESTRA



Tchaikovsky Spectacular

CSO SCHOOL CONCERTS

May 1, 2015 10:15 and 12:00

CSO FAMILY MATINEE SERIES

May 2, 2015 11:00 and 12:45

The CSO Family Matinee Series
is sponsored by:



the warranty group



WELCOME

HUBBARD STREET 2



SCHOOL CONCERTS

May 1, 2015
10:15 & 12:00

CSO FAMILY MATINEE SERIES CONCERTS

May 2, 2015
11:00 & 12:45

PERFORMERS:

Chicago Symphony
Orchestra

Edwin Outwater
conductor

Hubbard Street 2
dancers

Welcome to *Kidsbook*, your guide to the Chicago Symphony Orchestra **School Concerts** and **CSO Family Matinee Concerts**!

Tchaikovsky was a master at composing music to express emotion. At this concert, you will hear music portray many feelings—**wonder**, **yearning**, **anger**, **love**, **sadness**, **joy** and more! Special guests from Hubbard Street 2 will show you how dancing can help you understand the feelings expressed in Tchaikovsky's music, played by the Chicago Symphony Orchestra.

ON THE PROGRAM:

Tchaikovsky

Trepak FROM
The Nutcracker
Symphony No. 5,
Mvt. 2

Symphony No. 2,
Mvt. 2

Symphony No. 4,
Mvt. 1


Romeo and Juliet
Miniature March
FROM Suite No. 1
in D Minor

Symphony No. 6,
Mvt. 4


Elégie FROM *Serenade*
for Strings in C Major
Symphony No. 4,
Mvt. 4

Do you wonder what this concert will be like? What will you hear? What will you see? What will you feel?

Which balloon represents the feeling of wonder?

 As you listen to Symphony no. 5, take a moment to **wonder** how this music makes you feel. Do you hear an instrument that matches this emotion? Does the music's tempo (fast or slow) or dynamics (loud or soft) give the music its feeling? Tchaikovsky liked to use different musical elements to express emotion!

Playing is an important part of being a kid! Lots of kids like to pretend when they are playing. What do you like to pretend?

 Which balloon represents the feeling you have when you are playing pretend with your friends?

Listen for the marching beat in Symphony no. 2 and imagine you and your friends are creating a dance. How can you move your body to match the music? How do you think the dancers at the concert will move their bodies to the music?

Let's follow the balloons on Tchaikovsky Trail to discover more emotions found in his music!

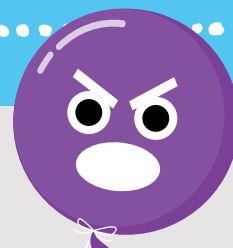
TCHAIKOVSKY TRAIL



Have you ever said to your parent, "I **want** ice cream!"?

Which balloon represents the feeling you have when you **want** ice cream?

If you listen carefully to Symphony no. 4, Mvt. 1, you can almost hear the violins saying, "Ice cream, I **want** ice cream!"



Have you ever used **angry** words with someone? How do you think the other person felt when they heard those words?

Choose two balloons, one that represents how you felt when you used **angry** words and one that represents how the other person felt.



Tchaikovsky's Symphony no. 6 isn't about a fallen scoop of ice cream, but the music does sound pretty **sad**. How are instruments able to express **sadness** without words?

Your parent eventually said "yes" to the ice cream. Woo hoo! But when you take the first lick, the ice cream falls to the ground!

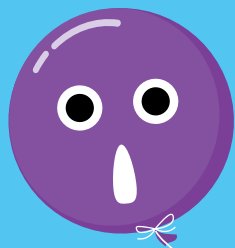
Which balloon represents how you feel when the ice cream hits the ground?

Listen to *Romeo and Juliet*. Does the music ever sound **angry**? Can you hear a battle between the instruments? When the woodwind instruments play alone and the harp comes in, what do you think has happened to the **anger**?



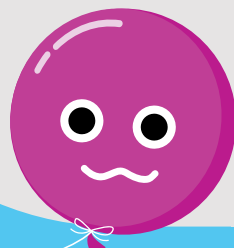
Your friend sees that you are upset and gives you a hug.

Which balloon represents the **calm** feeling you have when your friend comforts you?

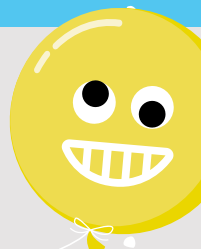


In Symphony no. 4, Mvt. 4, the music changes all the time. It starts out loud and then gets soft, and then gets loud again! How else does the music change? If you were to create a dance, how would you move your body to match what you are hearing and what you are feeling?

Tchaikovsky captures that same **calm** feeling in *Elégie* from *Serenade for Strings*. What other emotions do you feel when you hear this music?



The day has come to an end and like most days, you've felt a lot of **different emotions**! Choose all the balloons that represent how your feelings have changed during the day.



MEET THE CONDUCTOR



EDWIN OUTWATER

- Edwin Outwater was born in Santa Monica, California. He loves to read and earned his undergraduate degree from Harvard University in English literature.
- He is music director of the Kitchener-Waterloo Symphony in Ontario, Canada.
- Edwin also is the Director of Summer Concerts at the San Francisco Symphony.
- He has conducted the Chicago Symphony, New York Philharmonic, San Francisco Symphony, Los Angeles Philharmonic and Seattle Symphony, among many others.
- Edwin conducted the world premiere of *The Composer Is Dead* by Nathaniel Stookey and Lemony Snicket while he was Resident Conductor of the San Francisco Symphony from 2001–2006.



HUBBARD STREET 2

- Founded by Julie Nakagawa and Lou Conte in 1997 and now led by Terence Marling, Hubbard Street 2 prepares young adults for careers in contemporary dance in a dynamic environment that fosters artistic growth while allowing them to hone multiple techniques.
- HS2's dancers reach thousands annually with diverse programming that provides valuable outreach in schools, site-specific work for museums and cultural institutions, and evening-length performances of mixed repertoire.
- HS2 has been honored to perform at many prestigious venues including Symphony Center in Chicago; the John F. Kennedy Center for the Performing Arts; Joyce SoHo and North Carolina School of the Arts; and overseas in Germany, Italy, Luxembourg, South Africa, Switzerland and the Netherlands.

CHICAGO SYMPHONY ORCHESTRA / RICCARDO MUTI ZELL MUSIC DIRECTOR

PIERRE BOULEZ Helen Regenstein Conductor Emeritus
YO-YO MA Judson and Joyce Green Creative Consultant
DUAIN WOLFE Chorus Director and Conductor
MASON BATES, ANNA CLYNE Mead Composers-in-Residence

VIOLINS

Robert Chen
 Concertmaster
The Louis C. Sudler Chair, endowed by an anonymous benefactor
 Stephanie Jeong
 Associate Concertmaster
Cathy and Bill Osborn Chair
 David Taylor
 Yuan-Qing Yu
 Assistant Concertmasters*
 So Young Bae
 Cornelius Chiu
 Alison Dalton
 Gina DiBello
 Kozue Funakoshi
 Russell Hershov
 Qing Hou
 Nisanne Howell
 Blair Milton
 Paul Phillips, Jr.
 Sando Shia
 Susan Synnstedt
 Rong-Yan Tang

Baird Dodge
 Principal
 Sylvia Kim Kilcullen
 Assistant Principal
 Lei Hou
 Ni Mei
 Fox Fehling
 Hermine Gagné
 Rachel Goldstein
 Mihaela Ionescu
 Melanie Kupchynsky
 Wendy Koons Meir
 Aiko Noda§
 Joyce Noh
 Nancy Park
 Ronald Satkiewicz
 Florence Schwartz-Lee

VIOLAS

Charles Piklert
 Principal
 Li-Kuo Chang
 Assistant Principal
The Louise H. Benton Wagner Chair
 John Bartholomew

Catherine Brubaker
 Wei-Ting Kuo
 Danny Lai
 Diane Mues
 Lawrence Neuman
 Yukiko Ogura§
 Daniel Orbach
 Max Raimi
 Weijing Wang

CELLOS

John Sharp
 Principal
The Eloise W. Martin Chair
 Kenneth Olsen
 Assistant Principal
The Adele Gidwitz Chair
 Karen Basrak
 Loren Brown
 Richard Hirschl
 Daniel Katz
 Katinka Kleijn
 Jonathan Pegis
 David Sanders
 Gary Stucka
 Brant Taylor

BASSES

Alexander Hanna
 Principal
The David and Mary Winton Green Principal Bass Chair
 Daniel Armstrong
 Roger Cline
 Joseph DiBello
 Michael Hovnanian
 Robert Kassinger
 Mark Kraemer
 Stephen Lester
 Bradley Opland

HARPS

Sarah Bullen
 Principal
 Lynne Turner

FLUTES

Richard Graef
 Assistant Principal
 Louise Dixon
 Jennifer Gunn

PICCOLO

Jennifer Gunn

OBOES

Eugene Izotov
 Principal
The Nancy and Larry Fuller Chair
 Michael Henoeh
 Assistant Principal
Gilchrist Foundation Chair
 Lora Schaefer
 Scott Hostetler

ENGLISH HORN

Scott Hostetler

CLARINETS

Stephen Williamson
 Principal
 John Bruce Yeh
 Assistant Principal
 Gregory Smith
 J. Lawrie Bloom

E-FLAT CLARINET

John Bruce Yeh

BASS CLARINET

J. Lawrie Bloom

BASSOONS

William Buchman
 Acting Principal
 Dennis Michel
 Miles Maner

CONTRABASSOON

Miles Maner

HORNS

Daniel Gingrich
 Acting Principal
 James Smelser
 David Griffin
 Oto Carrillo
 Susanna Gaunt

TRUMPETS

Christopher Martin
 Principal
The Adolph Herseth Principal Trumpet Chair, endowed by an anonymous benefactor
 Mark Ridenour
 Assistant Principal
 John Hagstrom
 Tage Larsen

TROMBONES

Jay Friedman
 Principal
 Michael Mulcahy
 Charles Vernon

BASS TROMBONE

Charles Vernon

TUBA

Gene Pokorny
 Principal
The Arnold Jacobs Principal Tuba Chair, endowed by Christine Querfeld

TIMPANI

David Herbert
 Principal
The Clinton Family Fund Chair
 Vadim Karpinos
 Assistant Principal

PERCUSSION

Cynthia Yeh
 Principal
 Patricia Dash
 Vadim Karpinos
 James Ross

PIANO

Mary Sauer
 Principal

LIBRARIANS

Peter Conover
 Principal
 Carole Keller
 Mark Swanson

ORCHESTRA PERSONNEL

John Deverman
 Director
 Anne MacQuarrie
 Manager, CSO Auditions and Orchestra Personnel

STAGE TECHNICIANS

Kelly Kerins
 Stage Manager
 Dave Hartge
 James Hogan
 Christopher Lewis
 Patrick Reynolds
 Todd Snick
 Joe Tucker

*Assistant concertmasters are listed by seniority. †On sabbatical §On leave
 The Erika and Dietrich M. Gross Principal Flute Chair currently is unoccupied.

The Chicago Symphony Orchestra string sections utilize revolving seating. Players behind the first desk (first two desks in the violins) change seats systematically every two weeks and are listed alphabetically. Section percussionists also are listed alphabetically. The CSO's music director position is endowed in perpetuity by a generous gift from the Zell Family Foundation.



INSTRUMENTS OF THE ORCHESTRA

THE STRING FAMILY includes violin, viola, cello, bass and harp. These instruments are made of wood and strings, and are played by vibrating the strings using a bow or striking with a finger.



Violin



Viola



Cello



Bass



Harp

THE WOODWIND FAMILY includes flute, oboe, clarinet, bassoon and saxophone. These instruments all have the same basic shape: a long tube with a mouthpiece at one end. The flute is played by blowing across a hole to create a vibration. Oboe, clarinet, bassoon and saxophone are all played by blowing air into a single or double reed attached to the mouthpiece, creating a vibration that results in sound.



Flute

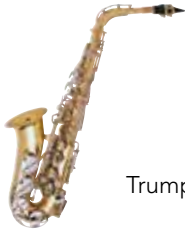


Oboe



Clarinet

Bassoon



Saxophone



Trumpet



Trombone



Tuba



Horn

THE PERCUSSION FAMILY includes snare drum, bass drum, gong, triangle, xylophone, timpani and piano, among many others. Percussion instruments are struck, scraped or shaken.



Timpani



Snare Drum



Xylophone



Cymbal



Piano

The CSO thanks **John Hart and Carol Prins** for their support of our family concerts.

CSO School Concerts receive additional generous support from **Abbott Fund, Illinois Arts Council, Kinder Morgan, Milne Family Foundation, Michael and Linda Simon and Walter and Caroline Sueske Charitable Trust.**

Adventures in Music, a project of the League of the CSOA, is generously sponsored by an anonymous donor.

Kidsbook® is a publication of the Negaunee Music Institute of the CSO.

For more information, call 312-294-3410 or e-mail institute@csso.org.

Content for Kidsbook was created by Katy Clusen.



**negaunee
music
INSTITUTE**

at the Chicago Symphony Orchestra